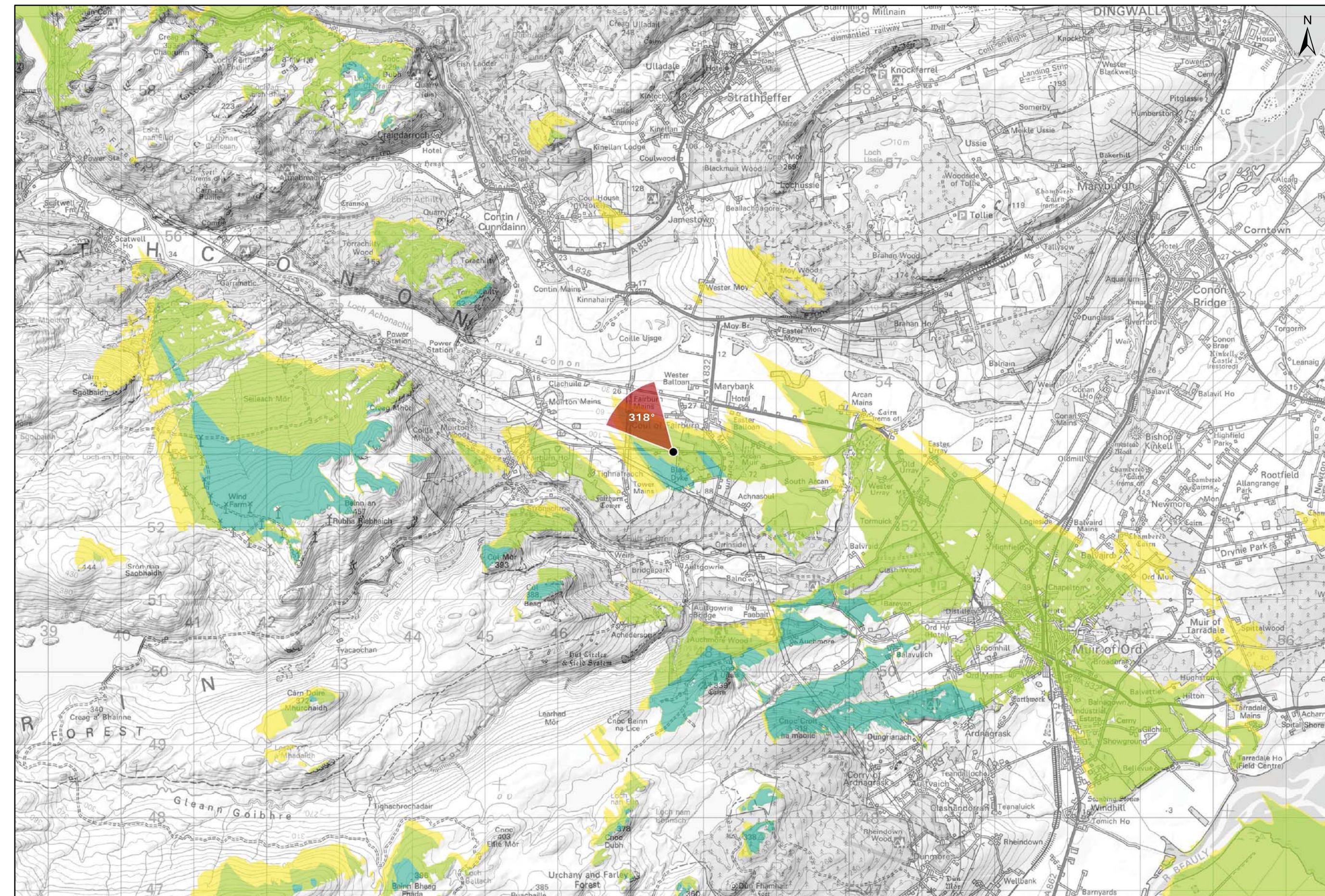


Viewpoint Location Plan Baseline Panorama  
Scale: 1:150,000



Viewpoint Location Plan  
Scale: 1:50,000 (Blade Tip ZTV)

**Note:**  
1. ZTV: Created using ESRI ArcGIS 10.5 software using the following data and parameters:  
Blade tip height: 133m  
DTM Data: OS Terrain 5 DTM. Resampled to a 10m grid.  
Observer height: 2m  
No surface features, such as buildings or trees, were included in the analysis.  
Earth curvature and light refraction has been included in calculations.

**Legend:**

- Proposed Turbines
- Viewpoint Location
- 90° Field of View Viewpoint
- 53.5° Field of View Viewpoint
- Cumulative Wind Turbines

**Wind Farm Status (01/10/2018)**

- Wind Farm Status (01/10/2018)
- Wind Farm Status (01/10/2018)
- Wind Farm Status (01/10/2018)
- Consented
- Operational; Under Construction

**Zone of Theoretical Visibility**

No. of Turbines (133m) Visible

- 1 - 3
- 4 - 6
- 7 - 9

Blade Tip:	133m
DTM:	OS T5
DTM resolution:	5m
Observer height:	2m
Surface features:	Excluded
Earth curvature:	Included

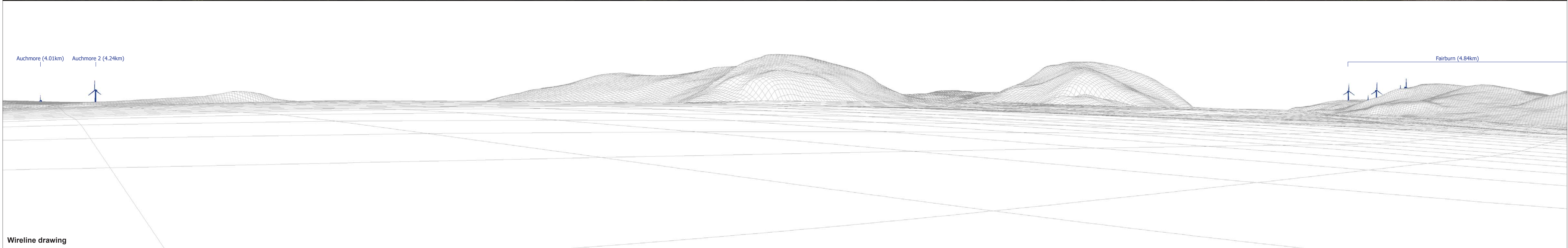
**Title:** Figure 9.29a  
Viewpoint 9: Avenue of Fairburn Estate  
Lochluichart Wind Farm Extension II

**Source:**  
© Crown copyright and database rights (2018)  
OS (license No 0100031673)

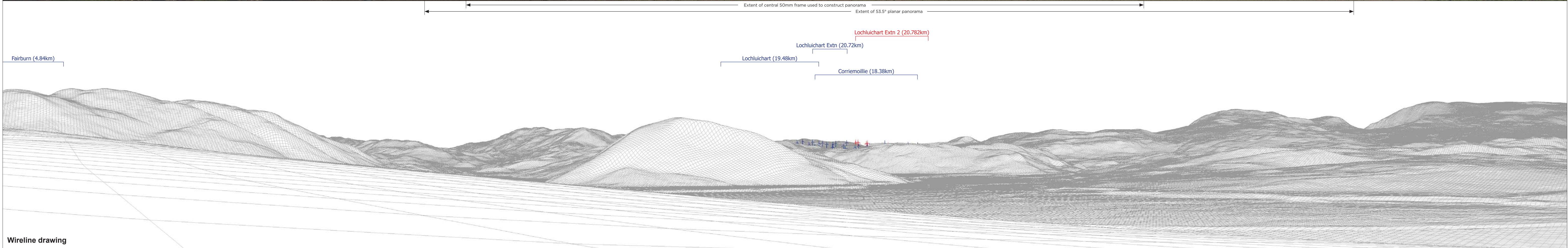
**Client:** Infinergy

<b>Drawn by:</b> MJF	<b>Checked:</b> JW
<b>Date:</b> 15/10/2018	<b>Figure:</b> 9.29a
<b>Scale:</b>	<b>Revision No.:</b> B

**INFINERGY**

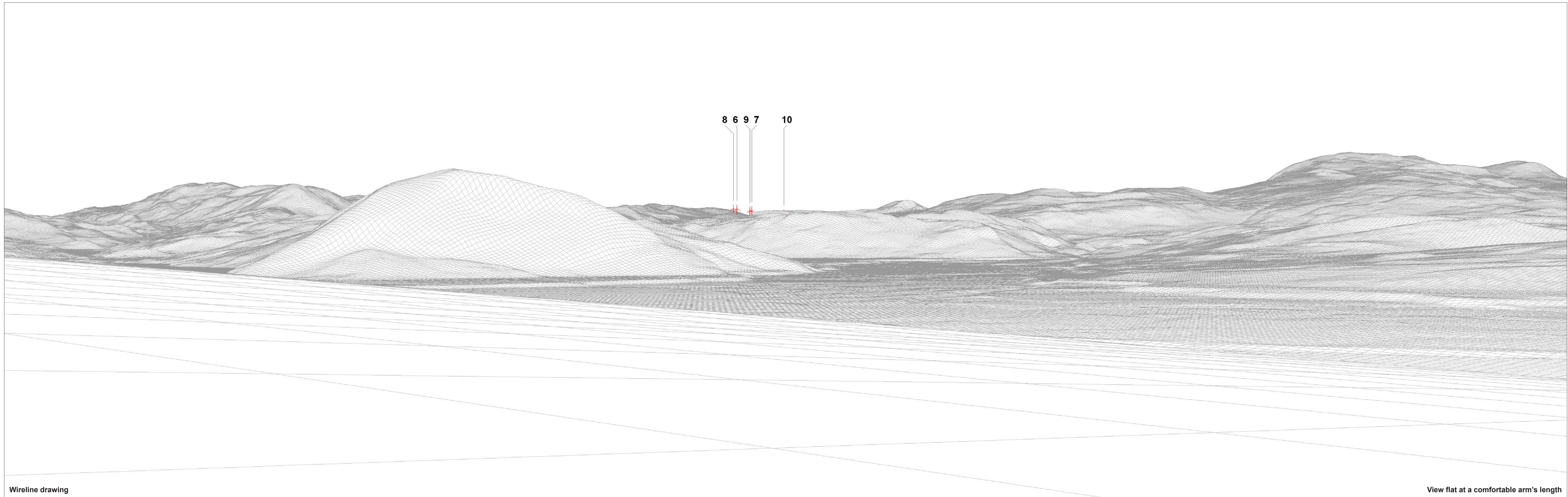


<b>OS reference:</b> 247591 E 853038 N <b>Eye level:</b> 99.2 m AOD <b>Direction of view:</b> 222° <b>Nearest turbine:</b> 20.780 km	<b>Horizontal field of view:</b> 90° (cylindrical projection) <b>Principal distance:</b> 522 mm	<b>Camera:</b> Canon EOS 5D Mark II <b>Lens:</b> 50mm (Canon EF 50mm f/1.4) <b>Camera height:</b> 1.5 m AGL <b>Date and time:</b> 16/05/18, 14:00	<b>Figure: 9.29b</b> <b>Viewpoint 9: Avenue of Fairburn Estate</b>
---	--	--	---



<b>OS reference:</b> 247591 E 853038 N	<b>Horizontal field of view:</b> 90° (cylindrical projection)	<b>Camera:</b> Canon EOS 5D Mark II
<b>Eye level:</b> 99.2 m AOD	<b>Principal distance:</b> 522 mm	<b>Lens:</b> 50mm (Canon EF 50mm f/1.4)
<b>Direction of view:</b> 312°		<b>Camera height:</b> 1.5 m AGL
<b>Nearest turbine:</b> 20.780 km		<b>Date and time:</b> 16/05/18, 14:00

**Figure: 9.29c**  
**Viewpoint 9: Avenue of Fairburn Estate**



Wireline drawing

View flat at a comfortable arm's length

**OS reference:** 247591 E 853038 N  
**Eye level:** 99.2 m AOD  
**Direction of view:** 318°  
**Nearest turbine:** 20.780 km

**Horizontal field of view:** 53.5° (planar projection)  
**Principal distance:** 812.5 mm  
**Paper size:** 841 x 297 mm (half A1)  
**Correct printed image size:** 820 x 260 mm

**Camera:** Canon EOS 5D Mark II  
**Lens:** 50mm (Canon EF 50mm f/1.4)  
**Camera height:** 1.5 m AGL  
**Date and time:** 16/05/18, 14:00

**Figure: 9.29d**  
**Viewpoint 9: Avenue of Fairburn Estate**



Photomontage (operational turbines have been montaged in this view)

View flat at a comfortable arm's length

<b>OS reference:</b>	247591 E 853038 N	<b>Horizontal field of view:</b>	53.5° (planar projection)	<b>Camera:</b>	Canon EOS 5D Mark II
<b>Eye level:</b>	99.2 m AOD	<b>Principal distance</b>	812.5 mm	<b>Lens:</b>	50mm (Canon EF 50mm f/1.4)
<b>Direction of view:</b>	318°	<b>Paper size:</b>	841 x 297 mm (half A1)	<b>Camera height:</b>	1.5 m AGL
<b>Nearest turbine:</b>	20.780 km	<b>Correct printed image size:</b>	820 x 260 mm	<b>Date and time:</b>	16/05/18, 14:00

**Figure: 9.29e**  
**Viewpoint 9: Avenue of Fairburn Estate**